



PEYLAA
PHUKET

AUTOGRAPH COLLECTION®
RESIDENCES



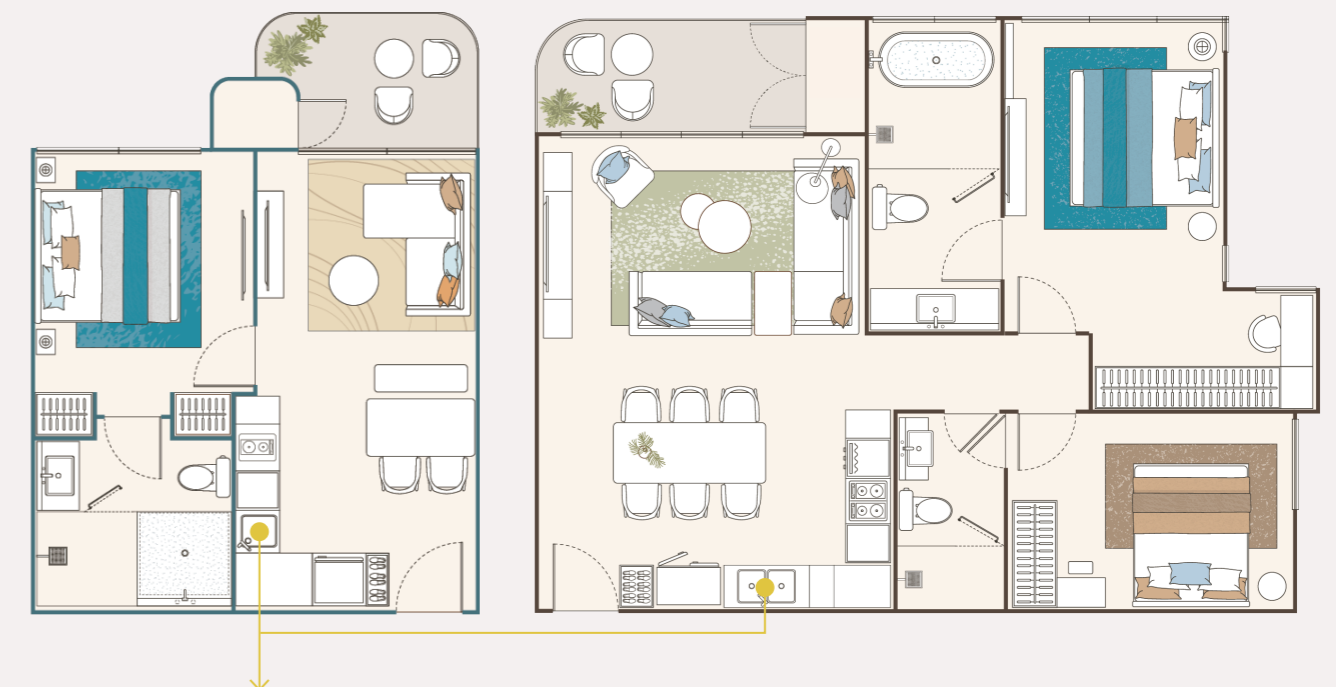
Safety,
Security,
Sustainability,
and
Innovation



In-Unit Water Leakage Detection System

How it works

The yellow rope functions as a water leakage detection sensor. Upon contact with water, the rope triggers an in-unit alarm system, alerting occupants immediately. After a predetermined duration, the alarm escalates, transmitting a signal to the command room, where it is monitored 24-7. To damage control in-unit furniture and asset if any water leakage happened.



Water leakage detection sensor location on critical area (under sink or boiler system)

Water Leak Detector with Rope Sensor



Flex Connector



Liquid Tight Fitting

Water Storage Tank With UV Filtration System

There is a UV filtration system that helps ensure the quality of the water filtered through it is good and safe for drinking.

How it works

We will install this UV filtration system before the clean water storage tank, and before the clean water tank sends water up to the residential building, there will be another filtration system associated with the water pump.

However, to ensure 100% drinking water quality, unit owners should install an additional drinking water filtration system within their apartments.



Fully Addressable Fire Alarm System

A fully addressable fire alarm system is an advanced safety solution that offers comprehensive monitoring and control of fire hazards within a building.

How it works

Individual Device Identification

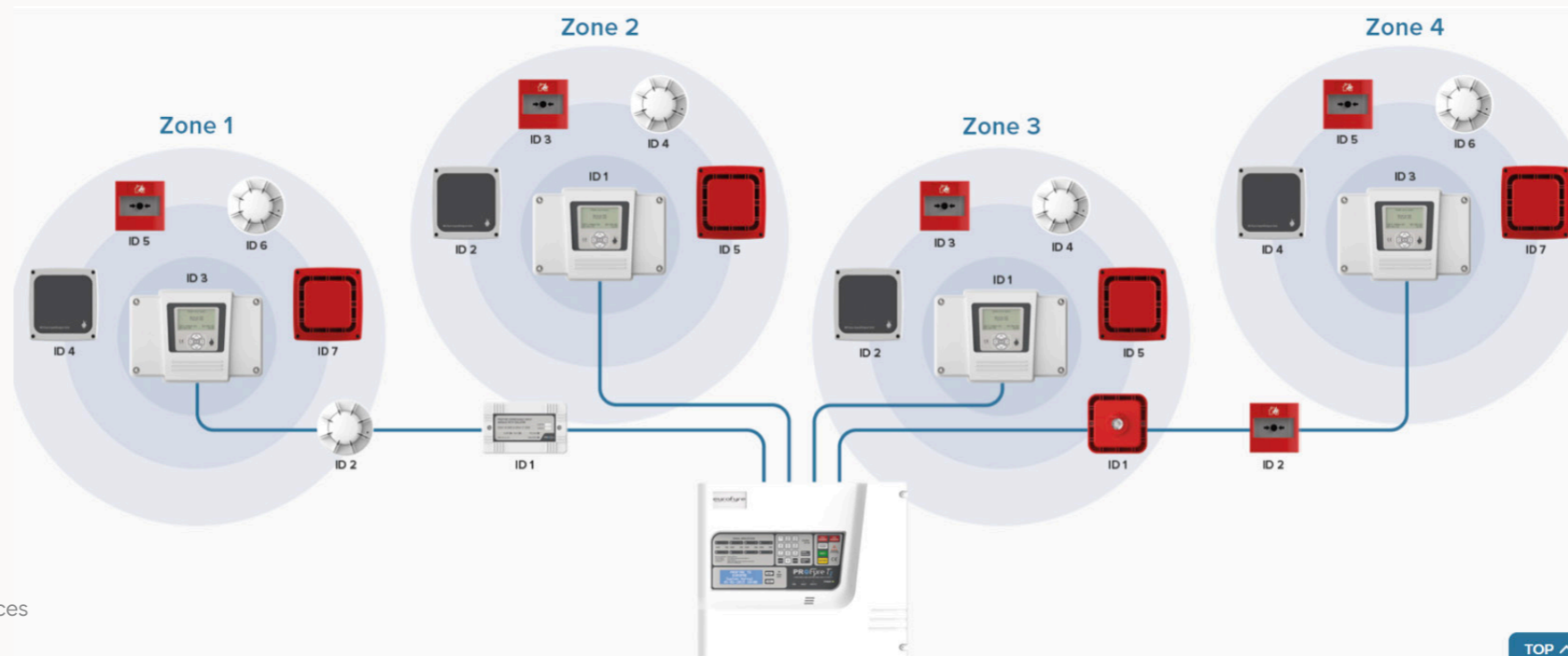
Each device in a fully addressable system has a unique address, allowing the control panel to identify the exact location of smoke detectors, heat sensors, and pull stations. This enables quicker response times and precise incident management.

Real-Time Monitoring

The system continuously monitors all devices in real-time, ensuring prompt detection of any issues. This enhances safety by allowing for immediate action when a potential threat is detected.

Detailed Reporting

Addressable systems provide detailed event logging and diagnostic information, helping users understand the exact nature and location of an alarm. This feature assists in effective communication with emergency responders and facilitates maintenance management.



Storage Boiler System

A storage water boiler (tank system) heats water and stores a ready volume so multiple outlets can draw hot water at once without a drop in comfort. This makes it ideal for multi-bathroom homes, families, and properties with high peak demand because the system supplies pre-heated water instantly from the tank.

How it works

Capacity and Reliability

emphasize the guarantee of hot water for simultaneous use and the peace of mind that comes with a stored reserve.

Comfort and Performance

promote stable temperature and pressure under multi-point use, a tangible benefit for customers upgrading to luxury fixtures.

Insulation and Reduced Cycling

Modern tanks use high-performance insulation and improved controls to limit standby heat loss and reduce frequent on/off cycling. Framing this as “engineered for real-world family use” helps counter the standby-loss objection and highlights practical efficiency improvements

Safety, Serviceability, and Trust

Storage systems are straightforward to service (anode replacement, element checks, pressure relief valves), which appeals to maintenance teams and homeowners. The visible tank and established technology also convey robustness and reliability, useful trust signals in marketing and sales conversations.



Hotel Integrated Digital Doorlock System

A hotel digital doorlock system adapts hospitality-grade access control to residential buildings, delivering centralized credential management, temporary access for guests and contractors, and detailed access logs that improve safety and operational efficiency.

How it works

Security and Access Control

- Enhanced physical security through electronic authentication methods that are harder to duplicate than mechanical keys.
- Immediate deactivation of lost or stolen credentials removes the risk of unauthorized re-entry without changing locks.
- These features are core advantages cited by hospitality deployments and translate directly to condo security improvements.
- Temporary access for cleaners, delivery personnel, or short-term guests simplify visitor handling without physical key exchanges, supporting modern condo lifestyles.

Integration and Scalability

- Integration with property management systems, intercoms, and building automation enables unified workflows (e.g., auto-issuing guest codes when a booking is confirmed) and future-proofing as the building adopts more smart features.

